



East Wolds

Community Newsletter

February 2023 *Issue 19*



*Local News and 'What's On' guide serving and delivered to:
Butterwick, Foxholes, Langtoft, Octon, Swaythorpe, Thwing & Wold Newton
Also available as a download in neighbouring villages: Kilham, Burton Fleming & Rudston*

Business Advertising Rates

- Eighth Page £ 10.00
- Quarter Page - £ 15.00
- Half Page - £ 20.00
- Full Page A5 - £ 35.00
- Back Cover A5 £ 45.00
- Front Cover Quarter Page £ 35.00
- Front Cover Half Page £ 45.00

Get **10% discount** when you pay for a three month run or **15% Discount** for a six month run

To add news or events

Contact Al Best

eastwoldsnews@gmail.com

Tel/Text/WhatsApp:07969 387107

Deadlines

As soon as the pages are full, that's it. This is anytime from the 7th to the 15th of the preceding month. If busy, the 7th may be too late but on slower months things can be accepted right up until the 15th. (*The latest the newsletter can go to print*). We need monthly confirmation of recurring events for the What's On section. Venues should make sure they confirm their dates by the 10th and let us know of any cancellations or timing changes.

Writers & Reporters Needed

The East Wolds Community Newsletter needs volunteers interested in writing small articles or gathering news.

The pieces should be about local history, geography, interesting people, folklore, wildlife, architecture, your activities club, food & drink or anything else that might

be of interest to local people.

It's fascinating to hear people's stories about life in this rural area so perhaps you could draw on your memories for a narrative about your experience of life here.

We also need news reports from all the area covered by the newsletter

It doesn't need to be a regular monthly contribution although things like a monthly gardening column would be most welcome,

(See inside back cover for contact details)

Cover Photographs

Last month, as always, I was in a bit of a rush to get the newsletter ready for print and I forgot to say what was shown in the cover photo. It was in fact an early portrayal of the pupils standing outside of the old school; in Thwing,

This month's photo is of a cricket team and was shared by Mary Summerville. Do you know anything about this team or who the players were?

If you have photo which you would like to share and which you think would make a good cover, please send it in,

Newsletter Finances

Brought Forward	£1028,40
Printing this edition	£-221.19
Anvil Arms Collection Tin	-
Donations Private	£30.00
Advertising Income	£35.00
Fundraising Quiz	£90.00
Carried forward	£962.21

The East Wolds Community Newsletter's

QUIZ

& Lucky Number Rollover

Thursday 2nd February

At The Anvil Arms, Wold Newton

From 7:30 onwards - Teams of 4 or less - £2.00 per head

Raffle - Lucky Number Rollover - Every 1st Thursday



107.2
Great Driffield
RADIO

YOUR NUMBER 1 LOCAL RADIO STATION
ACROSS GREAT DRIFFIELD & THE EAST RIDING
ON 107.2FM

THE OFFICIAL RADIO STATION FOR THE DRIFFIELD SHOW

Letters

Thankyou to everyone that voted for my Nativity Window. I didn't enter for the money, but because I wanted people to like it and enjoy it as much as I do - the meaning of Christmas. I am giving the prize money to charity because as a very wise person said, "Money is like manure, it does the most good when it is spread around where it is most needed."

Sincere Thanks, Mary

On behalf of Thwing & Octon Parish Council I would like to clarify the position of the Council following the letter in the December issue.

The Parish Council have for the last 4 years organised a short act of remembrance, held at the cross roads in Thwing, and dedicated to those who lost their lives in the two World Wars.

The planter at the cross roads bears a memorial plaque which was blessed by Reverend Grant in 2018.

The service allows those who do not wish to attend church another means of paying their respect, and is not a means by which the PC raise money for the British Legion or for any other charity.

At the PC meeting in October, it was agreed that we would bring the community together and open up the Church Rooms and offer refreshments to those who wished to attend.

A letter of complaint was received from a local resident and the response from the PC is drafted below.

" I write on behalf of Thwing & Octon Parish Council, following the receipt of your letter dated 10.11.2022 regarding the events on Remembrance Sunday the 13th November 2022.

On behalf of the Thwing and Octon Parish

Council I offer our sincere apologies for any issues that were caused by the short overlapping of events. The Chair also wishes to extend his apologies as he was unaware that the church had a service on this morning.

The idea behind extending our annual 2 mins silence at the village crossroads and offering open refreshments in the church rooms was intended to help bring the community together and offer a wider option of services for residents and visitors. Our event is now well attended by both local residents and the wider community who wish to show their respect for those we lost during the wars. The opening of the church rooms over this time allows both church goers and none church goers the opportunity to shelter if the weather is inclement, and to enjoy some much need social aspects.

This year's event was very positive and donations raised from refreshments were £175 together with a very generous single gift of £125, all of which will go to the Royal British Legion in addition to the monies donated in the Poppy Collection Tin of £108.42

For a community the size of Thwing & Octon this is a wonderful achievement and for the third year running we were the highest in the area. Special thanks go to all those who helped."

The Parish Council give their sincere thanks to those who baked cakes, and served refreshments and brought our small community together.

Sandra Morrison, Parish Clerk

Langtoft Art & Craft Group.

We have decided that we will not continue our regular meetings, at least for the time being. An announcement will be made here if this changes.

Guitar Lessons

The guitar lessons proposed in last months newsletter will definitely be going ahead. They are open to anyone in the newsletter area and are for both beginners and intermediates.

With support from the Amenities Group, and Phil generously giving his time, fees are being kept incredibly low at just £3.50 per lesson.

The lessons will be fortnightly starting on Wed 8th February @7pm at the Parish Room, Church Lane, Thwing,.

To apply or to find out more please contact
Phil Lavery 07813 812159
Phillavery8@gmail.com

Winners of the Thwing & Octon Christmas Decorations Competition

The winners were:

Best Window

Mary - Homeleigh Cottage - 20 votes

Best Exterior

Lynda - Hollybank House - 13 votes

WREATHS BY JEAN & JUDITH

The sum of £286 has been raised from the sale of wreaths, Xmas decorations & sweet cones.

The proceeds have been split between All Saints Church & Community centre Wold Newton.

A huge thanks to everyone who helped us to achieve this fabulous sum of money.

Your support is much appreciated. Thank you once again.



Range of over
10 grass types

No job to big
or small

Full garden design
and Fencing

Domestic &
commercial

Add some fun
to your garden
with a miniature
golf green.



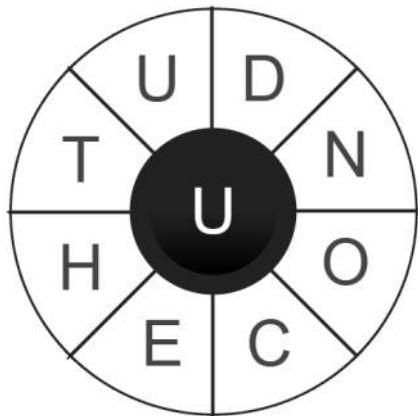
Artificial Grass

No Mowing -No Feeding
No Watering or Weeding

Call or WhatsApp Lewis 07713 854 097
or Andrew 07460 329 798

Word Wheel

How many words can you make? All must use the central letter. Your target is 40 words - can you get more? Clue for 9 letter word: Safe and sound



Riddle

There is an ancient invention, still used today, that allows people to see through walls. What is it?

Sudoku

Puzzle 1 (Medium, difficulty rating 0.51)

	7		5	4		2		
					3			1
6	8	9		2			3	
	6			7			4	
			1	8	4			
	5			3			8	
	2			9		7	1	3
9			3					
		8		1	7		9	

Short Quiz

Taken from the Anvil pub quiz nights.

Shades of Red

1. Dijon was the capital of which former French region?
2. What is the motto of the Salvation Army?
3. The title of the first novel in a series of historical fiction written by Baroness Orczy and published in 1905?
4. What is the stated colour of the ribbon associated with the Victoria Cross medal?
5. This was a UK number one hit for The Kaiser Chiefs?
6. Which silicate mineral has been used since the Bronze Age as gemstones and abrasives?
7. Peach Melba is a dessert of peaches, vanilla ice cream and which sauce?
8. What toxic shade of red was made by grinding cinnabar to a powder?
9. Give another name for reddish brown or dark ginger hair?

Answers on page 9

Puzzle 2 (Medium, difficulty rating 0.53)

				1				4
8		4	3		5			
6			7	8		1		
1		7					8	5
	4						3	
5	6					2		1
		6		4	3			8
			8		1	6		7
2				7				



LW Autosource

Quality Used Cars & Vans at Competitive Rates

Looking for a new vehicle or Disposal of your old car?

LW Autosource is able to accommodate your requirements. We hold vehicle stock and specialise in sourcing vehicles directly for our customers. We can accommodate your specific vehicle requirements by sourcing vehicles using the latest and most powerful buying platforms for pretty much any vehicle in the UK whether it be a modern or classic motor.

Vehicles are:

- Fully checked
- Inspected
- MOT'd
- Test driven
- Valeted
- Transferred same day
- Delivery and Part exchange also offered.

LW Autosource also offer a simple buy now trade disposal service for your old vehicle. This comes with no hidden fees and a no quibble service. Just a simple inspection, valuation and buy today offer, with payment same day.

Viewing of stock available to buy, by appointment.

Contact: t. 07950 717153 | e. lwautosource@outlook.com | www.lwautosource.co.uk

Based in Wold Newton, LW Autosource, is working hard locally and nationally to provide quality vehicles that are perfect for you.



See what our customers say about us, by visiting our 5* Google reviews

Becoming a Parish Councillor

What we do

East Riding has 168 town and parish councils, representing the electorate of their parishes as the first tier of local government.

Thwing & Octon Parish Council work closely with East Riding of Yorkshire Council who provide many of the services such as refuse collection and street cleaning.

Over the past few years The Parish Council have provided litter bins, defibrillators, benches, flower planters, village signs and our unique memory pole and beacon. They have instigated an ongoing programme of restoration of Thwing Mere, as well as liaising with ERYC on grass cutting, new drainage, footpath repairs and upgrading of our street lights.

2023 is an election year.

If you are over 18 and on the electoral role, and live or work wholly in the parish or within

a 3 mile radius you are most likely eligible to become a parish councillor.

Being a councillor can be a rewarding role, where you are able to support your community and help our parish to be a place worthy of calling home.

The Parish Council meet once a month, at 7.00pm, in the Church Rooms on Church Lane Thwing.

Our meeting dates for 2023 are :

January	16 th
February	13 th
March	13 th
April	17 th
May	15 th
June	12 th
July	10 th
August	no meeting
September	18 th
October	9 th
November	13 th
December	no meeting

All meetings are open to the public so please come along and join us.

Monthly Recipe

From Sandra Morrison - Thwing

Keep it if you Can Cake

Ingredients

8oz currants
6oz sultanas
4oz raisins
3 oz glace cherries
1lb plain flour
1 level tsp salt
8 oz castor sugar
6 oz margarine

4 oz mixed peel
2 level tsp of bicarbonate of soda
½ pint of milk
3tbsp malt vinegar

Method

Rub margarine into the flour, add sugar, fruit and cherries. Dissolve the bicarbonate of soda in the milk in a basin and add the vinegar, then beat quickly into the dry ingredients. Bake in a high sided lined tin at 160 for about 2 ¾ hours or until done.

LANGTOFT LADIES

We meet in the Bowls Club the first Thursday of the month at 1.30pm

Our next meeting is on

Thursday 2nd February 2023

Our speaker will be **Gill Carrick** who will give a talk on

Comic Postcards

We are a lively friendly group and always welcome new members,

Subscription is £10 per year.

If you would like to come for a visit to check us out, its £2 which includes Tea and biscuits.

If you require more info ring Pat on 07900 081464 or Rose on 01377 267413

The Thwing Coffee Morning

**Saturday 5th February
10am till Noon**

Join us in the Parish Room for our **Coffee Morning**. Coffee/tea, biscuits, scones, buns and a chat.

Thwing & Octon Amenities Group

150 Club

The January Winners were:

- **£50 - Mary Summerville**
- **£10 - Selena Dodgson**

Publicly drawn on the first Thursday of every month at the Anvil Arms Quiz.

Word Wheel

The nine letter word is UNTOUCHED

Riddle

A window

Sudoku

NB There may be more than one solution

Quiz

1. Burgundy
2. Blood and Fire
3. The Scarlet Pimpernel
4. Crimson
5. Ruby
6. Garnet
7. Raspberry
8. Vermillion
9. Auburn

1

Puzzle 1 (Medium, difficulty rating 0.51)

1	7	3	5	4	9	2	6	8
2	4	5	8	6	3	9	7	1
6	8	9	7	2	1	4	3	5
8	6	1	9	7	5	3	4	2
3	9	2	1	8	4	6	5	7
7	5	4	6	3	2	1	8	9
5	2	6	4	9	8	7	1	3
9	1	7	3	5	6	8	2	4
4	3	8	2	1	7	5	9	6

2

Puzzle 2 (Medium, difficulty rating 0.53)

3	7	5	9	1	2	8	6	4
8	1	4	3	6	5	9	7	2
6	2	9	7	8	4	1	5	3
1	3	7	6	2	9	4	8	5
9	4	2	1	5	8	7	3	6
5	6	8	4	3	7	2	9	1
7	9	6	2	4	3	5	1	8
4	5	3	8	9	1	6	2	7
2	8	1	5	7	6	3	4	9

Thwing Christmas Tree

On behalf of the Parish Council I offer sincere apologies that we have let residents down, by not providing our usual Christmas Tree at the crossroads of Thwing.

In the interest of being more environmentally friendly we moved from a good sized cut tree to a rooted tree. The result was a much smaller tree which will be grown on for next year.

Household Support Fund

The Household Support Fund will help vulnerable households with the rising cost of heating oil.

On application if eligible, households will receive an oil delivery of approx. 500 litres and free membership to the YORSwitch Bulk Oil Buying Scheme for the year. (normally £20 per year).

To be eligible you must

- be employed, or self employed, and
- have a gross income of under £26,000 per year for a single person or £31,000 for a couple; and
- have total savings of under £1,000; and not currently receive any benefits; and
- be responsible for paying the household's oil, LPG and electricity bills; and
- not have previously received any other Government cost of living payment (apart from the £150 council tax energy rebate which was made to all households).

The full criteria can be viewed on the HWRCC website below, along with the application forms.

<https://www.hwrcc.org.uk/east-riding-household-fund-for-oil-customers/>

Ad Sales Helper Needed

Can you help by selling advertising space in the newsletter?

We need advertisers and while there are many businesses that would benefit from the grassroots reach we offer, we have nobody to go in pursuit of them.

Companies offering home delivery of groceries and drinks, double glazing services, oil delivery, waste disposal, mobile hairdressers, builders, decorators, accountants, dog-groomers, etc, all need to be approached. Even places like Bridlington Spa might like to advertise their shows, or takeaway food shops might welcome the opportunity to publicise their delivery service.

If you have time to spare and would like to help keep the newsletter going by selling advertising space to these businesses, please get in touch.

Foxholes Community Hall

The hall is the ideal venue for a large range of functions, events, meetings and group activities.



Set in a lovely rural environment with stunning views over the Wolds, the hall is perfect for weddings, parties and concerts. Fully equipped with a modern kitchen.

A smaller meeting room is available to hire separately. Full disabled access throughout. There is ample on-site parking.

Our current hourly rates are highly competitive
For all enquires please e-mail:
info@foxholeshall.com



Taking the greatest care
in and around Driffield

FUNERALS FROM £995

Funerals

Prepaid Funeral Plans

Memorials

We're here for you anytime.

Whatever your wishes or budget, we can provide a funeral to suit you.

HENRY NAYLOR FUNERAL DIRECTORS

Easterfield House
1 New Road, Driffield
North Humberside YO25 5DL
01377 252222

henrynaylor.driffield@dignityfunerals.co.uk



dignityfunerals.co.uk/local

We're proud to be a Dignity Funeral Director, providing exceptional services to families across the UK. Pricing is correct at time of going to print and is subject to change. Price stated is for an Unattended Funeral.

Updates from Cllrs Owen Dewhirst and Evison

Although a little late in the year we would still like to take the opportunity to wish everyone the best for 2023,

Cost of living impact on farmers

The cost of living continues to bite & many farmers are caught in the middle of a battle where they are trying to cope with huge increases in overheads and a demand for cheaper food.

Everyone is aware of the current pressure the increased cost of living is having on households & businesses, however, we are keen to raise awareness of the impact on farmers and at a recent meeting of the Full Council at Beverley we took the opportunity to highlight the position of many of our farmers and request East Riding of Yorkshire Council writes to our local MP's and Defra seeking the urgent development of national policies to support our food producing industry and create a viable food system for the future, which could include:

- Targets for all public sector organisations to buy 50% or more of their food locally
- Powers to ensure supply chains are fair and equitable supporting local producers
- To continue to give energy relief to producers post April 2023
- Invest in ways of addressing workforce issues

Since inception East Riding of Yorkshire Council has acknowledged its rural roots and is almost unique in local government in supporting a Rural Partnership which has been in place for over 25 years. In recent months

meetings with some of our local farmers have outlined the severe pressure they are under to try and make ends meet, whilst we will continue to support on a local level to help the farming industry it will need National attention to really make a difference. Our farmers invest & work hard to produce the food we put on our tables, adhering to the high standards we require, and we cannot afford to allow the present situation to jeopardise the future of our farmers. We have a growing population; we need to protect our local food supply with some changes that will ensure there is a future for farming.

The pandemic and then the war in Ukraine have reminded us of the importance of domestic food production and the vital role that the East Riding plays in feeding the nation. We must do more to support the industry during these difficult times, improve our self-sufficiency and recognise food security in national policy areas, such as planning.

Village Halls Fund

For anyone with an interest in their Village Hall the following information on the Platinum Jubilee Village Halls Fund, maybe of interest.

The first stage of the fund applications closed on 20th January but DEFRA have stated they will re-open for further stage 1 funding in mid February.

The aim of the Platinum Jubilee Village Halls Fund is to support the modernisation and improvement of village halls, so that they are fit for purpose and can provide activities which seek to achieve one or more of the following outcomes for their communities:

- improved health and/or wellbeing and/or reduction in rural loneliness,
 - positive impact on the local environment, contributes towards net zero,
 - support for the local rural economy,
 - promotion of community cohesion.
- Grants are for capital improvements only, where projects aim to either upgrade, extend or improve facilities, or where capital items need to be purchased. They cannot be used for maintenance, repair or renewal work.

The recommendation is groups only apply to the fund once projects are well developed and have much of the funding already in place.

For further information go to : <https://acre.org.uk/platinum-jubilee-village-halls-fund/>

“Christmas in Thwing”

As Church Warden of All Saints Church here in Thwing, I must sincerely thank all those willing people – Jill, Sue, Maggie, Chris, Ruth, Mary, Anne, Molly, Tim & Kate for decorating our Church before our Family Carol Service Christmas. It was as impressive as ever!

Our Carol Service was well attended, but if I’m honest not just quite as good as last year?

Our regular “band of Carol Singers” was depleted this year – the winter “logie” knocked out some of our strongest voices, but undeterred, and being supplied with a welcome stimulant at Christmas Cottage at the start of our tour, and even more goodies as we journeyed round the village – at Pear Tree Farm, Highfield Farm, Middle

Cottage – finally ending up at Syndale for supper and the “money count”!

The weather was kind to us – the singing was maybe not quite of the highest standard – but the wonderful people of Thwing very generously gave us £258 – one of our highest totals.

THANK YOU TO EVERYONE- our singers and all those who welcomed us with “open doors”. The money raised will go to a Village Project - to be decided.

Judy Burdass – Church Warden

**Learn to
Play Guitar**

Starting Feb 8th, 7pm

**At the Parish Room, Church Ln.
Thwing**

Fees £3.50 per lesson

For beginners & intermediates
To apply or to find out more
please contact **Phil Lavery**
07813 812159
Phillavery8@gmail.com



Wold Newton Community Centre

Want to hire our space?

Contact Judith 01262 470368

Census 2021 - Snippets

Religion:

In the 2021 census, 39.1% of East Riding of Yorkshire residents reported having "No religion", this is up from 23.4% in 2011. Only 53.3% of people in East Riding of Yorkshire describe themselves as Christian.

Population:

Between the last two censuses (held in 2011 and 2021), the population of East Riding of Yorkshire increased by 2.4%, from just under 334,200 in 2011 to around 342,200 in 2021.

Age:

The number of people, living in the East Riding of Yorkshire, aged 65 to 74 years, rose by around 9,700 (an increase of 25.1%), while the number of residents between 35 and 49 years fell by just over 12,900 (18.3% decrease).

If you are interested in the 2021 census information you can view the first results at the Office for National Statistics website ons.gov.uk

What's On By Category

Arts & Crafts

- 02-Feb [Art Group](#) @ Foxholes Community Hall 1:00 PM
- 06-Feb [Craft Group](#) @ Foxholes Community Hall 2:00 PM
- 09-Feb [Art Group](#) @ Foxholes Community Hall 1:00 PM
- 16-Feb [Art Group](#) @ Foxholes Community Hall 1:00 PM
- 20-Feb [Craft Group](#) @ Foxholes Community Hall 2:00 PM
- 23-Feb [Art Group](#) @ Foxholes Community Hall 1:00 PM
- 02-Mar [Art Group](#) @ Foxholes Community Hall 1:00 PM

Bowls

- 02-Feb [Short Mat Bowls](#) @ Foxholes Community Hall 7:00 PM
- 09-Feb [Short Mat Bowls](#) @ Foxholes Community Hall 7:00 PM
- 16-Feb [Short Mat Bowls](#) @ Foxholes Community Hall 7:00 PM
- 23-Feb [Short Mat Bowls](#) @ Foxholes Community Hall 7:00 PM
- 02-Mar [Short Mat Bowls](#) @ Foxholes Community Hall 7:00 PM

Children's Entertainment

- *02-Feb [Rudston Rascals Playgroup](#) @ Rudston Village Hall 10:00 AM
- *09-Feb [Rudston Rascals Playgroup](#) @ Rudston Village Hall 10:00 AM
- *16-Feb [Rudston Rascals Playgroup](#) @ Rudston Village Hall 10:00 AM
- *23-Feb [Rudston Rascals Playgroup](#) @ Rudston Village Hall 10:00 AM

*02-Mar [Rudston Rascals Playgroup](#) @ Rudston Village Hall 10:00 AM

Clubs & Social Groups

02-Feb [Langtoft Ladies](#) @ Bowls Club, Langtoft 1:30 PM

25-Feb [Fella's at Foxholes Breakfast Club](#) @ Foxholes Community Hall 9:30 AM

28-Feb [Yorkshire Coast Farm Women's Club](#) @ Foxholes Community Hall 7:30 PM

02-Mar [Langtoft Ladies](#) @ Bowls Club, Langtoft 1:30 PM

Coffee Mornings

04-Feb [Coffee Morning & Library](#) @ Foxholes Community Hall 10:00 AM

04-Feb [Thwing Coffee Morning](#) @ Parish Room, Church Road, Thwing 10:00 AM

13-Feb [Friends of Langtoft Coffee Morning](#) @ Church Room, Langtoft 10:00 AM

18-Feb [Coffee Morning & Library](#) @ Foxholes Community Hall 10:00 AM

25-Feb [Coffee Morning](#) @ Wold Newton Community Centre 10:00 AM

04-Mar [Coffee Morning & Library](#) @ Foxholes Community Hall 10:00 AM

04-Mar [Thwing Coffee Morning](#) @ Parish Room, Church Road, Thwing 10:00 AM

Games Night

14-Feb [Whist Drive](#) @ Foxholes Community Hall 7:30 PM

*17-Feb [Bingo](#) @ Ship Inn, Langtoft 7:00 PM

Line Dancing

01-Feb [Line Dancing](#) @ Foxholes Community Hall 7:00 PM

08-Feb [Line Dancing](#) @ Foxholes Community Hall 7:00 PM

15-Feb [Line Dancing](#) @ Foxholes Community Hall 7:00 PM

22-Feb [Line Dancing](#) @ Foxholes Community Hall 7:00 PM

01-Mar [Line Dancing](#) @ Foxholes Community Hall 7:00 PM

Live Music

07-Feb [Anvil Jam night](#) @ Anvil Arms Wold Newton 8:00 PM

08-Feb [Guitar Lessons](#) @ Parish Room, Church Road, Thwing 7 PM

14-Feb [Anvil Jam night](#) @ Anvil Arms Wold Newton 8:00 PM

21-Feb [Anvil Jam night](#) @ Anvil Arms Wold Newton 8:00 PM

22-Feb [Guitar Lessons](#) @ Parish Room, Church Road, Thwing 7 PM

28-Feb [Anvil Jam night](#) @ Anvil Arms Wold Newton 8:00 PM

Photography

06-Feb [Photography Group](#) @ Foxholes Community Hall 7:30 PM

20-Feb [Photography Group](#) @ Foxholes Community Hall 7:30 PM

Quiz Night

02-Feb [Anvil Quiz](#) @ Anvil Arms Wold Newton 7:30 PM

*24-Feb [Quiz](#) @ Ship Inn, Langtoft 8:00 PM

02-Mar [Anvil Quiz](#) @ Anvil Arms Wold Newton 7:30 PM

Tai Chi

01-Feb [Tai Chi Classes](#) @ Wold Newton Community Centre 10:00 AM

08-Feb [Tai Chi Classes](#) @ Wold Newton Community Centre 10:00 AM

15-Feb [Tai Chi Classes](#) @ Wold Newton Community Centre 10:00 AM

22-Feb [Tai Chi Classes](#) @ Wold Newton Community Centre 10:00 AM
01-Mar [Tai Chi Classes](#) @ Wold Newton Community Centre 10:00 AM

Yoga

06-Feb [Yoga Class](#) @ Foxholes Community Hall 11:30 AM
13-Feb [Yoga Class](#) @ Foxholes Community Hall 11:30 AM
20-Feb [Yoga Class](#) @ Foxholes Community Hall 11:30 AM
27-Feb [Yoga Class](#) @ Foxholes Community Hall 11:30 AM

By Venue

Anvil Arms Wold Newton

02-Feb [Anvil Quiz](#) 7:30 PM
07-Feb [Anvil Jam night](#) 8:00 PM
14-Feb [Anvil Jam night](#) 8:00 PM
21-Feb [Anvil Jam night](#) 8:00 PM
28-Feb [Anvil Jam night](#) 8:00 PM
02-Mar [Anvil Quiz](#) 7:30 PM

Bowls Club, Langtoft

02-Feb [Langtoft Ladies](#) 1:30 PM
02-Mar [Langtoft Ladies](#) 1:30 PM

Church Room, Langtoft

13-Feb [Friends of Langtoft Coffee Morning](#) 10:00 AM

Foxholes Community Hall

01-Feb [Line Dancing](#) 7:00 PM
01-Feb [Parish Council Meeting](#) 7:30 PM in the Library
02-Feb [Art Group](#) 1:00 PM
02-Feb [Short Mat Bowls](#) 7:00 PM
04-Feb [Coffee Morning & Library](#) 10:00 AM
06-Feb [Photography Group](#) 7:30 PM
06-Feb [Yoga Class](#) 11:30 AM
06-Feb [Craft Group](#) 2:00 PM
07-Feb [CABI Fashion Show](#) 1.00pm and 7.30pm
08-Feb [Line Dancing](#) 7:00 PM
09-Feb [Art Group](#) 1:00 PM
09-Feb [Short Mat Bowls](#) 7:00 PM
13-Feb [Yoga Class](#) 11:30 AM
14-Feb [Whist Drive](#) 7:30 PM
15-Feb [Line Dancing](#) 7:00 PM
16-Feb [Art Group](#) 1:00 PM
16-Feb [Short Mat Bowls](#) 7:00 PM

18-Feb **Coffee Morning & Library** 10:00 AM
20-Feb **Photography Group** 7:30 PM
20-Feb **Yoga Class** 11:30 AM
20-Feb **Craft Group** 2:00 PM
22-Feb **Line Dancing** 7:00 PM
23-Feb **Art Group** 1:00 PM
23-Feb **Short Mat Bowls** 7:00 PM
25-Feb **Fella's at Foxholes Breakfast Club** 9:30 AM
27-Feb **Yoga Class** 11:30 AM
28-Feb **Yorkshire Coast Farm Women's Club** 7:30 PM
01-Mar **Line Dancing** 7:00 PM
02-Mar **Art Group** 1:00 PM
02-Mar **Short Mat Bowls** 7:00 PM
04-Mar **Coffee Morning & Library** 10:00 AM

Parish Room, Church Road, Thwing

04-Feb **Thwing Coffee Morning** 10:00 AM
08-Feb **Guitar Club - Learn to play** 7 PM
22-Feb **Guitar Club - Learn to play** 7 PM
04-Mar **Thwing Coffee Morning** 10:00 AM

Rudston Village Hall

*02-Feb **Rudston Rascals Playgroup** 10 AM
*09-Feb **Rudston Rascals Playgroup** 10 AM
*16-Feb **Rudston Rascals Playgroup** 10 AM
*23-Feb **Rudston Rascals Playgroup** 10 AM
*02-Mar **Rudston Rascals Playgroup** 10 AM

Ship Inn, Langtoft

*17-Feb **Bingo** 7:00 PM
*24-Feb **Quiz** 8:00 PM

Wold Newton Community Centre

01-Feb **Tai Chi Classes** 10:00 AM
08-Feb **Tai Chi Classes** 10:00 AM
15-Feb **Tai Chi Classes** 10:00 AM
22-Feb **Tai Chi Classes** 10:00 AM
25-Feb **Coffee Morning** 10:00 AM
01-Mar **Tai Chi Classes** 10:00 AM

** Dates marked with an asterisks, although regular events, have not been confirmed by the organisers for this month, so please double check*

To add an event to the What's On section (*Free of charge*)
email eastwoldsnews@gmail.com or
text/WhatsApp/call 07969 387107

The Benefices

Driffield and Wolds Churches

Wednesday, 1st February, 9:30 am

All Saints', Driffield

Sunday, 5th February, 9:15 am

St Mary's, Little Driffield (Book of Common Prayer)

Sunday, 5th February, 11:00 am

St Peter's, **Langtoft**

Sunday, 5th February, 11:00 am

All Saints', Driffield (Morning Prayer)

Wednesday, 8th February, 9:30 am

All Saints', Driffield

Sunday, 12th February, 9:15 am

All Saints', **Thwing**

Sunday, 12th February, 11:00 am

All Saints', Driffield

Wednesday, 15th February, 9:30 am

All Saints', Driffield

Sunday, 19th February, 9:15 am

St Mary's, Little Driffield (Book of Common Prayer)

Sunday, 19th February, 11:00 am

St Peter's, **Langtoft**

Sunday, 19th February, 11:00 am

All Saints', Driffield (Morning Prayer)

Wednesday, 22nd February, 9:30 am

All Saints', Driffield

Sunday, 26th February, 9:15 am

All Saints', **Thwing**

Sunday, 26th February, 11:00 am

All Saints', Driffield

Wednesday, 1st March, 9:30 am

All Saints', Driffield

Sunday, 5th March, 9:15 am

St Mary's, Little Driffield (Book of Common Prayer)

Sunday, 5th March, 11:00 am

St Peter's, **Langtoft**

Sunday, 5th March, 11:00 am

All Saints', Driffield (Morning Prayer)

Wold Newton

Usual services at All Saints' Church, Wold Newton are -

Communion Service on the 1st Sunday of each month at 10.00am and a Communion Service on the 3rd. Sunday, also at 10.00am.

Please check with one of our Churchwardens though, as occasionally there are changes or additional services. Contact details are - Carol Brunt - 01262/470838 or Julie West 01262-470546.

Whatever the service, you will be warmly welcomed.

All Saints, Thwing Floodlighting Scheme

5th February

Private Donor

12th February

"Cherished birthday memories of my special husband George on the 14th February with fondest love always"

Miriam Gilson

19th February

Private Donor

26th February

Private Donor

To add a dedication please contact

Chris Oxtoby 01262 470255

Useful Contacts

East Wolds Community Newsletter

All Best eastwoldsnews@gmail.com

Orchard Cottage, Main Street, THWING YO25 3DY

Tel/SMS/WhatsApp +44 7969 387107

Thwing & Octon

Thwing & Octon Parish Council

Clerk: Sandra Morrison

Tel: 01262 470496

email: thwing.clerk@outlook.com

Thwing Churchwardens

Mr Tim Burdass 01262 470244

Mrs Judy Burdass 01262 470201

Thwing Parish Room

Mr Martin Dodgson 01262 470324

Thwing & Octon Amenities Group

Chair: Chris Oxtoby 01262 470255

Sec: Debbie Best 01262 470460

Langtoft

Langtoft Parish Council

Clerk: Su Todd

email: langtoftparishcouncil80@gmail.com

Tel: 07840 800614

Langtoft Churchwardens

Jackie Burton and Chris Burton

Tel: 01377 267984 / 07813 937654

Langtoft Church Rooms

Contact: Sharon 07961 801215

sharonpjeffery@googlemail.com

The Ship Inn

07833 774918

Wold Newton

Wold Newton Parish Council

Clerk: Zoe Warters

Email: woldnewtonpc@yahoo.com

Wold Newton Churchwardens

Carol Brunt - 01262 - 470838

Julie West - 01262 - 470546

Wold Newton Community Centre

Judith 01262 470368

The Anvil Arms

01262 470279

Foxholes & Butterwick

Foxholes with Butterwick Parish Council

Clerk: Chris Adnitt

email: foxholesbutterwickpc@outlook.com

Foxholes Community Hall

Rod 01377 267054 / 07748 755607

Butterwick Churchwarden

Rod Buckley

Tel:- 01377 267054 mob:-07748755607

East Riding of Yorkshire Council

Bins, Rubbish & Recycling

Telephone (01482) 393939

Planning & Building Control

Telephone (01482) 393792

Council Tax

Telephone (01482) 393939

Libraries

Telephone (01482) 392702

Adult Social Care

Telephone (01482) 393939

Children's Social Care

(01482) 395500

Road & Footpath Safety

Telephone (01482) 393939

Street Lighting

(01482) 395740

North Yorkshire County Council

Telephone 01609 780 780

Ryedale District Council

Telephone 01653 600 666

Report fly-tipping - Ryedale District Council

www.ryedale.gov.uk/services/fly-tipping/

Help Lines

ERYC Domestic violence

confidential helpline

(01482) 396330

Medical Help

For urgent medical help call 111

For emergencies call 999

Police

Non-emergencies call 101

Emergencies only 999

Humberside Police

Local officers PC 680 Phillips and PCSO 7568

Sharp. Rural Task Force is headed by Sgt 1668

Jones. Speak to these officers by calling 101 and asking for them by name and number.

Venues for Hire

Wold Newton Community Centre

Contact: Judith 01262 470368

Thwing Parish Room

Contact: Mr Martin Dodgson 01262 470324

Foxholes Community Hall

Rod 01377 267054 / 07748 755607

Burton Fleming Village Hall

Kate Mercer: 01262 470556/07860 478867

Langtoft Church Rooms

Contact: Sharon 07961 801215

sharonpjeffery@googlemail.com

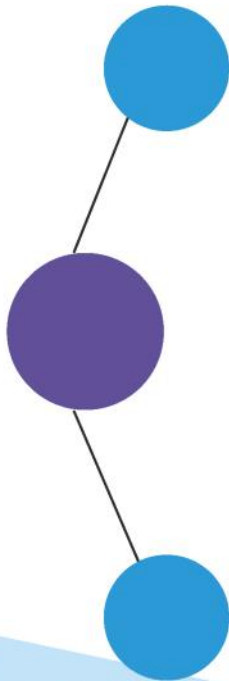
Pubs

Anvil Arms, Wold Newton 01262 470279

1Lt
RTU spray
now available

*OF&G
Certified

CZF PLUS & *CZ HOOF CARE RANGE IS SUITABLE FOR CATTLE, SHEEP & GOATS



Aids in the healing
of **Digital Dermatitis**
& **Slurry Heel** in cattle.

Granuloma (strawberry
foot) foot abscess,
Whiteline & Shelly Hoof
Footrot (*Dichelobacter*
Nodosus) & **CODD**
(Contagious Ovine Digital
Dermatitis) in sheep.

**Actively seeking
new distributors**

***Beware of
Inferior Imitations!***

**CZF & CZ hoof products
do not contain QUATS**

Sue: 01765 822120 | Kevin: 07801 670515
sales@czfplus.co.uk www.czfplus.co.uk

Errata

In the printed edition of this newsletter:

(Does not apply to this PDF version which has been corrected)

Cover

1. The issue was labelled as January when it should have been February

What's On Guide

1. The date for Fellas at Foxholes Breakfast Club is incorrect. The correct date is Feb 25th @ 9:30pm